

71015.000 White (RAL9002)
 LED module: 6W 630lm 3000K warm white
 Phase dimmable+ On-board Dim Version 5
 Spherolit lens, wallwash

Product description
 Cylindrical light head: cast aluminium, powder-coated. 270° tilt.
 Housing: polymer, rotatable on 3-circuit adapter through 360°.
 ERCO control gear, dimmable. Rotary control for brightness regulation.
 3-phase adapter for ERCO 220-240V track: polymer, white.
 LED module: high-power LEDs on metal-core PCB. Collimating lens made of optical polymer.
 Dimming with external dimmers possible (trailing edge).
 Protection Class II
 Weight 0.50kg

Mean illuminance E_n (wall)

Angle of tilt 35°	3			
Wall height (m)	1.00	1.25	1.25	1.50
Offset from wall (m)	1.00	1.25	1.25	1.50
Luminaire spacing (m)	1.00	1.25	1.25	1.50
Illuminance E_n (lx)	135	108	91	76

Technical data

Luminous flux of the luminaire	511lm
Connected load	9.3W
Luminaire efficacy	55lm/W
Colour deviation	1.5 SDCM
Colour rendition index	CRI 92
Lumen maintenance (LED manufacturer specifications)	L90/B10 ≤50000h L90 ≤100000h
LED failure rate	0.1% ≤50000h
Dimming range	1%-100%
Dimming method	PWM
LMF	E
Standby power per control gear	--
Luminaires per circuit breaker B16	162



Mounting
 ERCO 3-circuit track
 Hi-trac 3-circuit track
 1-circuit singlet

Planning data

Illuminance E_n (lx)

Specifications:

Number of luminaires $n > 5$

Wall height (m) 3.0

Angle of tilt 35°

Offset from wall (m) Luminaire spacing (m)	1.00		1.00		1.25		1.25	
	below the luminaire	between the luminaires	below the luminaire	between the luminaires	below the luminaire	between the luminaires	below the luminaire	between the luminaires
0.250	39	43	31	36	23	26	19	22
0.500	91	99	75	78	49	54	41	45
0.750	138	148	118	111	76	81	65	66
1.000	166	177	143	131	96	103	84	81
1.250	173	183	149	136	107	114	95	90
1.500	171	175	146	131	110	117	97	93
1.750	155	161	130	122	111	114	97	91
2.000	141	146	118	112	103	107	90	86
2.250	124	128	102	99	97	100	84	81
2.500	105	109	86	86	89	92	76	74
2.750	88	91	71	73	80	83	68	68

Cleaning (a) Ambient conditions	1				2				3			
	P	C	N	D	P	C	N	D	P	C	N	D
LMF	0.96	0.94	0.90	0.86	0.93	0.91	0.86	0.81	0.92	0.90	0.84	0.79
RSMF	0.99	0.97	0.95	0.92	0.98	0.97	0.95	0.92	0.98	0.97	0.95	0.92

Hours of operation (h)	1000		5000		10000		20000		30000		40000		50000	
	LLMF	LSF	LLMF	LSF	LLMF	LSF	LLMF	LSF	LLMF	LSF	LLMF	LSF	LLMF	LSF
LLMF	1.00	0.99	0.98	0.96	0.94	0.92	0.90							
LSF	1	1	1	1	1	1	1							

MF	LMFxRSMFxLLMFxLSF
MF	Maintenance Factor
LMF	Luminaire Maintenance Factor
RSMF	Room Surface Maintenance Factor
LLMF	Lamp Lumens Maintenance Factor
LSF	Lamp Survival Factor
P	Room pure
C	Room clean
N	Room normal
D	Room dirty

Data according to regulations

2019/2020/EU supplemented by 2021/341/EU and 2019/2015/EU supplemented by 2021/340/EU Energy Consumption Labelling Ordinance

This product contains a light source of efficiency class E
Due to thermal and photometric properties as well as to protect electronic components from ESD (electrostatic discharge) the light source cannot be changed by the customer.

ID EPREL: 696734

Model identifier: 3000054467

Download data sheets for control gear and disassembly instructions at www.erco.com/slr

Technical data in accordance with international norms and standards

IEC 60598	Luminaires – Part 1+2: general requirements, specific requirements and tests
IEC 62031	LED modules for general lighting – safety requirements
IEC 62471	Photobiological safety of lamps and lamp systems
EN 13032-4	Light and lighting – measurement and representation of photometric data
CIE 13	Method of measuring and specifying colour rendering properties of light sources

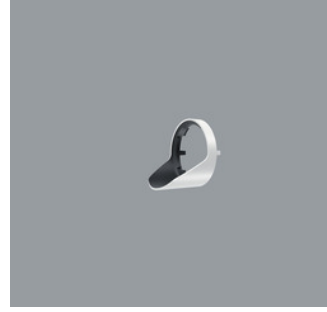
All technical data is subject to industry-standard tolerances.
Also see www.erco.com/erco-led

For explanations of the symbols and abbreviations used and other general information, see www.erco.com/symbols

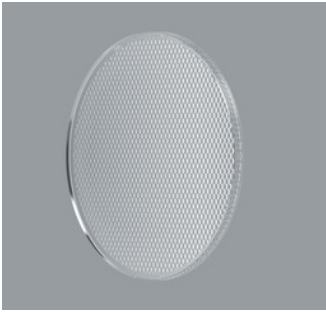
Accessories



70851.000
Spherolit lens spot
made of optical polymer.
Replacement without tools.



74398.000
Snoot
Polymer.
White



70852.000
Spherolit lens flood
made of optical polymer.
Replacement without tools.



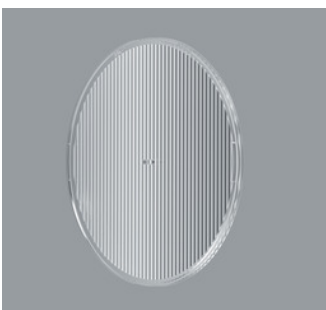
74397.000
Snoot
Polymer.
Black



70853.000
Spherolit lens wide flood
made of optical polymer.
Replacement without tools.



70978.000
Spherolit lens extra wide flood
made of optical polymer.
Replacement without tools.



70854.000
Spherolit lens oval flood
made of optical polymer.
Replacement without tools.



70855.000
Spherolit lens wallwash
made of optical polymer.
Replacement without tools.