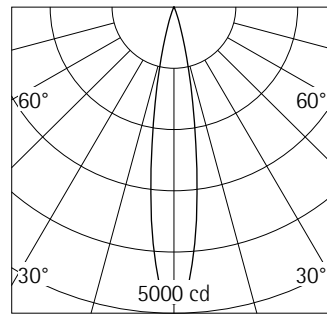


71005.000 White (RAL9002)
 LED module: 6W 630lm 3000K warm white
 Phase dimmable+ On-board Dim Version 5
 Spherolit lens, spot

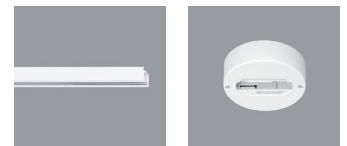
Product description
 Cylindrical light head: cast aluminium, powder-coated. 270° tilt.
 Housing: polymer, rotatable on 3-circuit adapter through 360°.
 ERCO control gear, dimmable. Rotary control for brightness regulation.
 3-phase adapter for ERCO 220-240V track: polymer, white.
 LED module: high-power LEDs on metal-core PCB. Collimating lens made of optical polymer.
 Dimming with external dimmers possible (trailing edge).
 Protection Class II
 Weight 0.50kg



h(m)	E(lx)	D(m)
		17°
1	4848	0.30
2	1212	0.60
3	539	0.90
4	303	1.20
5	194	1.49

Technical data

Luminous flux of the luminaire	551lm
Connected load	9.3W
Luminaire efficacy	59lm/W
Colour deviation	1.5 SDCM
Colour rendition index	CRI 92
Lumen maintenance (LED manufacturer specifications)	L90/B10 ≤50000h L90 ≤100000h
LED failure rate	0.1% ≤50000h
Dimming range	1%-100%
Dimming method	PWM
LMF	E
Standby power per control gear	--
Luminaires per circuit breaker B16	162



Mounting
 ERCO 3-circuit track
 Hi-trac 3-circuit track
 1-circuit singlet

For your regional contact in the ERCO
 Sales network [click here](http://www.erco.com/contact)
www.erco.com/contact

Technical Region: 220-240V 50/60Hz
 We reserve the right to make technical and design changes.
 Edition: 27.04.2023
 Current version under
www.erco.com/71005.000

Planning data

Cleaning (a) Ambient conditions	1				2				3			
	P	C	N	D	P	C	N	D	P	C	N	D
LMF	0.96	0.94	0.90	0.86	0.93	0.91	0.86	0.81	0.92	0.90	0.84	0.79
RSMF	0.99	0.97	0.95	0.92	0.98	0.97	0.95	0.92	0.98	0.97	0.95	0.92
Hours of operation (h)	1000	5000	10000	20000	30000	40000	50000					
LLMF	1.00	0.99	0.98	0.96	0.94	0.92	0.90					
LSF	1	1	1	1	1	1	1					

MF	LMFxRSMFxLLMFxLSF
MF	Maintenance Factor
LMF	Luminaire Maintenance Factor
RSMF	Room Surface Maintenance Factor
LLMF	Lamp Lumens Maintenance Factor
LSF	Lamp Survival Factor
P	Room pure
C	Room clean
N	Room normal
D	Room dirty

Data according to regulations

2019/2020/EU supplemented by 2021/341/EU and 2019/2015/EU supplemented by 2021/340/EU Energy Consumption Labelling Ordinance

This product contains a light source of efficiency class E
 Due to thermal and photometric properties as well as to protect electronic components from ESD (electrostatic discharge) the light source cannot be changed by the customer.

ID EPREL: 696734
 Model identifier: 3000054467
 Download data sheets for control gear and disassembly instructions at www.erco.com/slr

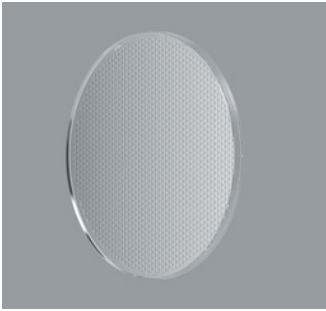
Technical data in accordance with international norms and standards

IEC 60598	Luminaires – Part 1+2: general requirements, specific requirements and tests
IEC 62031	LED modules for general lighting – safety requirements
IEC 62471	Photobiological safety of lamps and lamp systems
EN 13032-4	Light and lighting – measurement and representation of photometric data
CIE 13	Method of measuring and specifying colour rendering properties of light sources

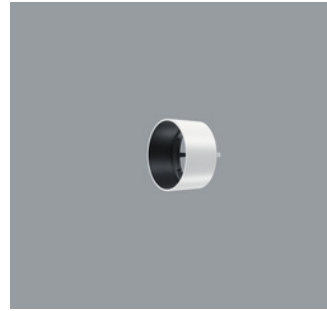
All technical data is subject to industry-standard tolerances.
 Also see www.erco.com/erco-led

For explanations of the symbols and abbreviations used and other general information, see www.erco.com/symbols

Accessories



70851.000
Spherolit lens spot
made of optical polymer.
Replacement without tools.



74389.000
Snoot
Polymer.
White



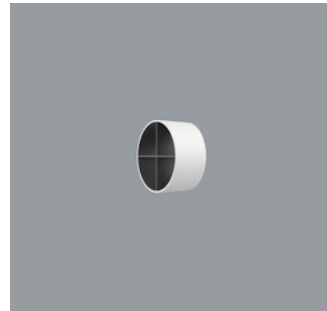
70852.000
Spherolit lens flood
made of optical polymer.
Replacement without tools.



74396.000
Snoot
Polymer.
Black



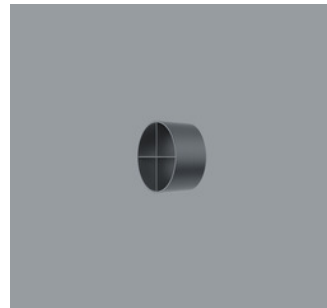
70853.000
Spherolit lens wide flood
made of optical polymer.
Replacement without tools.



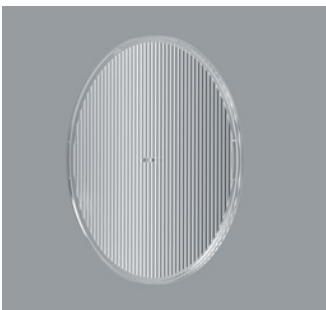
78035.000
Cross-baffle
Aluminium, coated black, polymer
outer.
White



70978.000
Spherolit lens extra wide flood
made of optical polymer.
Replacement without tools.



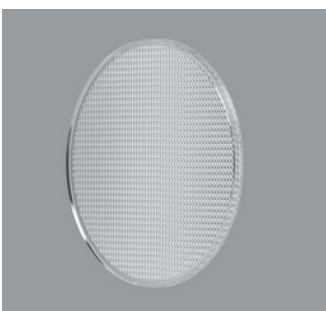
78039.000
Cross-baffle
Aluminium, coated black, polymer
outer.
Black



70854.000
Spherolit lens oval flood
made of optical polymer.
Replacement without tools.



78031.000
Honeycomb anti-glare screen
Black



70855.000
Spherolit lens wallwash
made of optical polymer.
Replacement without tools.

